



Knife Gate Valves (ANSI 150 & PN10) LUG CONSTRUCTION BI-DIRECTIONAL (Ductile Iron) ANSI/AWWA C520-10



Quality Management: ISO 9001:2008

Authorized Distributor

SERIES

GJL

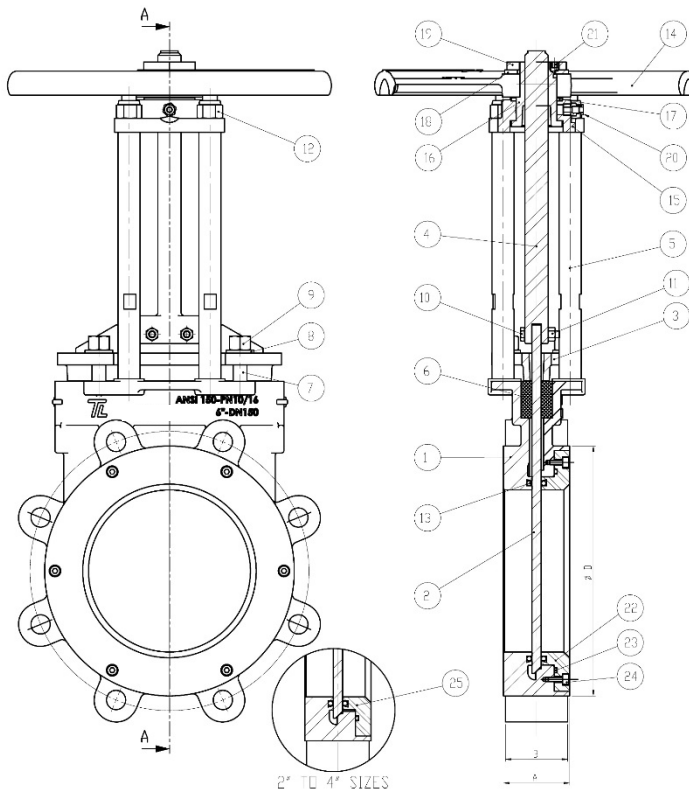


Knife Gate Valves (ANSI 150 & PN10)

LUG CONSTRUCTION BI-DIRECTIONAL

(Ductile Iron) ANSI/AWWA C520-10

Parts and materials



| Item | Description | Material |
|------|-----------------------|---------------------|
| 1 | Body | EN-GJL-400 |
| 2 | Knife | AISI 304 |
| 3 | Gland Flange | EN-GJL-400 |
| 4 | Stem | ASTMA351 |
| 5 | Stanchion | AISI 303 |
| 6 | Packing | TEFLON |
| 7 | Gland Packing Stud | AISI 304 |
| 8 | Gland Packing Washer | A 105 |
| 9 | Gland Packing Nut | Carbon Steel |
| 10 | Coupling Bolt | Carbon Steel |
| 11 | Coupling Nut | Carbon Steel |
| 12 | Stanchion Nut | Carbon Steel |
| 13 | Resilient Seat O-Ring | VITON |
| 14 | Handw heel | WCB |
| 15 | Bridge | WCB |
| 16 | Yoke Sleeve | 1.0737 + HT65 |
| 17 | Thrust Washer | Carbon Steel + HT65 |
| 18 | Washer | Carbon Steel |
| 19 | Handw heel Nut | Carbon Steel |
| 20 | Lubricating Nipple | Carbon Steel |
| 21 | Flat Point Set Screw | Carbon Steel |
| 22 | Bolted Insert | ASTMA351 |
| 23 | O-Ring | EPDM |
| 24 | Insert Bolt | Carbon Steel |
| 25 | Threaded Insert | ASTMA351 |

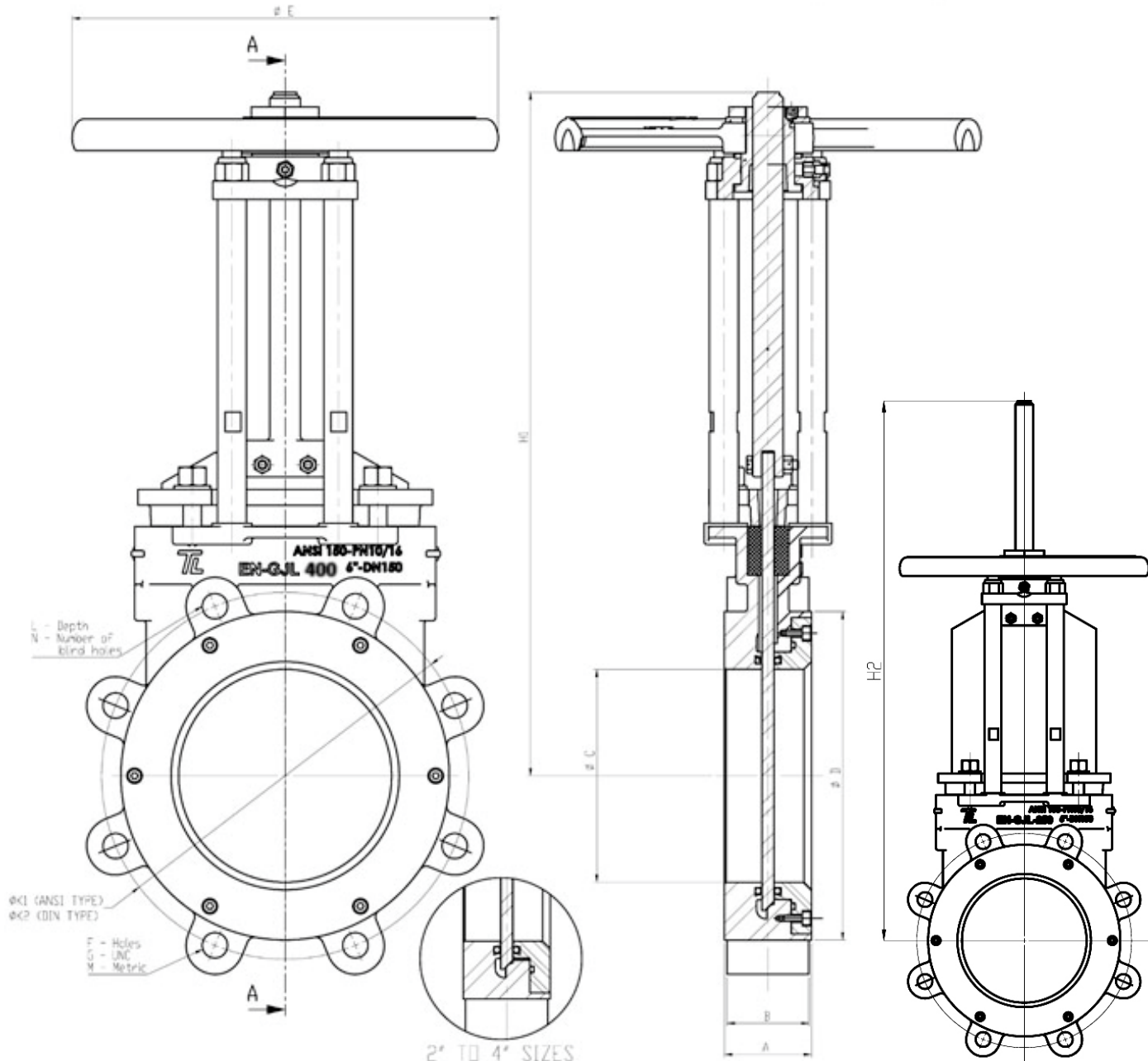
Authorized Distributor

SERIES

GJL



Knife Gate Valves (ANSI 150 & PN10) LUG CONSTRUCTION BI-DIRECTIONAL (Ductile Iron) ANSI/AWWA C520-10 Dimensions



| DN | A | B | ØC | ØD | ØE | F | | G | | M | H1 | H2 | ØK1 | | ØK2 | | L | N | | Weight |
|-------------|-----|-----|------|------|------|-----------------|----------------|----------|----------|------|------|------|----------|----------|----------|---------------|-----|---------------|--|--------|
| | | | | | | ANSI 150 / PN10 | ANSI 150 | DIN PN10 | ANSI 150 | | | | DIN PN10 | ANSI 150 | DIN PN10 | ANSI 150/PN10 | | ANSI 150/PN10 | | |
| 2" (DN50) | 1.9 | 1.7 | 1.9 | 3.6 | 11.3 | 4/4 | 5/8"-11 UNC | M16/M16 | 11.2 | 13.4 | 8.3 | 4.9 | 0.51 | 2/2 | | | 13 | | | |
| 3" (DN80) | 2.0 | 1.9 | 2.7 | 5.0 | 11.3 | 4/8 | 5/8"-11 UNC | M16/M16 | 12.3 | 15.7 | 6.0 | 6.3 | 0.24 | 2/2 | | | 23 | | | |
| 4" (DN100) | 2.0 | 1.9 | 3.6 | 6.2 | 11.3 | 8/8 | 5/8"-11 UNC | M16/M16 | 14.6 | 18.8 | 7.5 | 7.1 | 0.39 | 2/2 | | | 30 | | | |
| 6" (DN150) | 2.3 | 2.1 | 5.5 | 8.5 | 11.3 | 8/8 | 3/4" - 10 UNC | M20 | 17.7 | 23.8 | 9.5 | 9.5 | 0.51 | 2/2 | | | 52 | | | |
| 8" (DN200) | 2.8 | 2.6 | 7.2 | 10.6 | 11.8 | 8/8 | 3/4" - 10 UNC | M20 | 22.4 | 30.5 | 11.8 | 11.6 | 0.71 | 2/4 | | | 93 | | | |
| 10" (DN250) | 2.8 | 2.6 | 9.0 | 12.8 | 11.8 | 12/12 | 7/8" - 9 UNC | M20 | 26.0 | 36.0 | 14.3 | 13.8 | 0.71 | 4/4 | | | 120 | | | |
| 12" (DN300) | 3.0 | 2.9 | 11.3 | 15.0 | 14.0 | 12/12 | 7/8" - 9 UNC | M20 | 31.7 | 43.7 | 17.0 | 15.7 | 0.71 | 4/4 | | | 185 | | | |
| 14" (DN350) | 3.0 | 2.9 | 13.1 | 16.7 | 15.7 | 12/16 | 1" - 8 UNC | M20 | 39.8 | 53.1 | 18.8 | 18.1 | 0.63 | 4/6 | | | 311 | | | |
| 16" (DN400) | 3.5 | 3.4 | 14.8 | 21.3 | 19.7 | 16/16 | 1" - 8 UNC | M24 | 44.6 | 59.9 | 21.3 | 20.3 | 0.91 | 6/6 | | | 410 | | | |
| 18" (DN450) | 3.5 | 3.4 | 16.5 | 21.0 | 19.7 | 16/20 | 1 1/8" - 7 UNC | M24 | 48.0 | 65.4 | 22.8 | 22.2 | 0.75 | 6/8 | | | 489 | | | |
| 20" (DN500) | 4.5 | 4.4 | 18.3 | 23.0 | 23.6 | 20/20 | 1 1/8" - 7 UNC | M24 | 52.2 | 71.7 | 25.0 | 24.4 | 1.10 | 8/8 | | | 700 | | | |
| 24" (DN600) | 4.5 | 4.4 | 22.0 | 27.2 | 28.3 | 20/20 | 1 1/4" - 7 UNC | M27 | 59.9 | 83.3 | 29.5 | 28.5 | 0.98 | 8/8 | | | 998 | | | |

Dimensions in inches and weight in lbs.

Authorized Distributor

SERIES

GJL



Knife Gate Valves (ANSI 150 & PN10)

LUG CONSTRUCTION BI-DIRECTIONAL

(Ductile Iron) ANSI/AWWA C520-10

General Characteristics, Torque & Cv, Pressure Rating

General Characteristics

Flanges match ASME (ANSI) B 16.5 – 150lbs and EN-1092 PN10

All Knife gate valves are built and tested in accordance with AWWA C520-10 and TAPPI T1S 405-8

- Directives: **DIR 98/37/CE (MACHINES)**
DIR 97/23/CE (PED) Fluid: Group 1(b), 2 (Cat.I, mod. A)
DIR 94/9/CE (ATEX) Group II, Cat. 3: zones 2 and 22

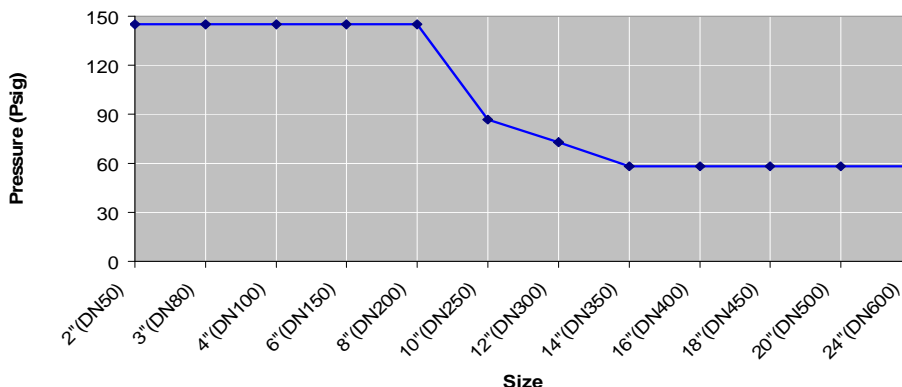
Torque Values in ft lbf

| VALVE SIZE | AT DIFFERENTIAL PRESSURE | | VALVE SIZE | AT DIFFERENTIAL PRESSURE | |
|-------------|--------------------------|--|-------------|--------------------------|--|
| | Class 150 & PN10 | | | Class 150, & PN10 | |
| 2" (DN 50) | 7.9 | | 12" (DN300) | 208.4 | |
| 3" (DN80) | 8.3 | | 14" (DN350) | 360.7 | |
| 4" (DN100) | 9.1 | | 16" (DN400) | 475.7 | |
| 6" (DN150) | 29.1 | | 18" (DN450) | 585.6 | |
| 8" (DN200) | 83.3 | | 20" (DN500) | 815.7 | |
| 10" (DN250) | 104.0 | | 24" (DN600) | 1,231.7 | |

Cv Values in Gallons/min

| VALVE SIZE | PERCENTAGE OPEN | | | | | | | | | |
|------------|-----------------|--------|--------|--------|--------|--------|--------|--------|--------|--------|
| | 10% | 20% | 30% | 40% | 50% | 60% | 70% | 80% | 90% | 100% |
| 2" | 23 | 45 | 64 | 84 | 99 | 118 | 133 | 143 | 153 | 163 |
| 3" | 69 | 140 | 197 | 251 | 306 | 355 | 399 | 434 | 468 | 493 |
| 4" | 118 | 232 | 335 | 429 | 518 | 602 | 680 | 745 | 789 | 838 |
| 6" | 281 | 557 | 799 | 1,011 | 1,233 | 1,440 | 1,612 | 1,770 | 1,893 | 1,992 |
| 8" | 498 | 1,001 | 1,420 | 1,810 | 2,209 | 2,564 | 2,879 | 3,170 | 3,382 | 3,560 |
| 10" | 799 | 1,593 | 2,278 | 2,909 | 3,540 | 4,102 | 4,615 | 5,069 | 5,414 | 5,700 |
| 12" | 1,272 | 2,529 | 3,619 | 4,610 | 5,611 | 6,518 | 7,327 | 8,062 | 8,599 | 9,053 |
| 14" | 1,464 | 2,924 | 4,181 | 5,335 | 6,479 | 7,524 | 8,446 | 9,279 | 9,950 | 10,453 |
| 16" | 2,110 | 4,216 | 604 | 7,692 | 9,329 | 10,882 | 12,253 | 13,441 | 14,358 | 15,088 |
| 18" | 2,766 | 5,522 | 7,889 | 10,044 | 12,258 | 14,190 | 15,946 | 17,514 | 18,707 | 19,723 |
| 20" | 2,603 | 7,159 | 10,226 | 13,066 | 15,808 | 18,362 | 20,728 | 22,720 | 24,328 | 25,639 |
| 24" | 5,315 | 10,611 | 15,206 | 19,318 | 28,460 | 27,316 | 30,886 | 31,793 | 36,063 | 37,670 |

Working pressure



Authorized Distributor

SERIES

GJL